



Where we meet

The ISACM organizes a biannual conference for members and non-members at different international venues. The next meeting will be held in 2013, in Sapporo, Japan.

At BIOMAG conferences, a business meeting is organized. All members are welcome to attend.

All meetings, important dates and other news are published on the ISACM website:

www.ISACM.info

Who we are

President

Takashi Nagamine, MD, PhD
Sapporo Medical University
Japan

Vice-President

Ritva Paetau, MD
Helsinki University Central Hospital
Finland

Secretary

Jyrki Makela, MD, PhD
Helsinki University Central Hospital
Finland

Treasurer

Susan Bowyer, PhD
Henry Ford Hospital Detroit
Michigan, USA

How to contact us

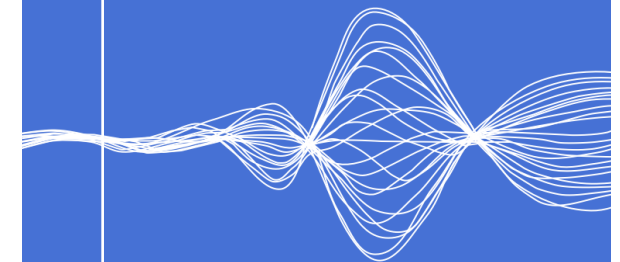
Dr. Takashi Nagamine, ISACM President
Dept. of System Neuroscience
School of Medicine, Sapporo Medical University
South 1 West 17, Chuo-ku
Sapporo, Hokkaido
Japan 060-8556

Dr. Jyrki Mäkelä, ISACM Secretary
BioMag Laboratory Haanfmaninkafu 4
Finland F1-00029 HUS

www.ISACM.info

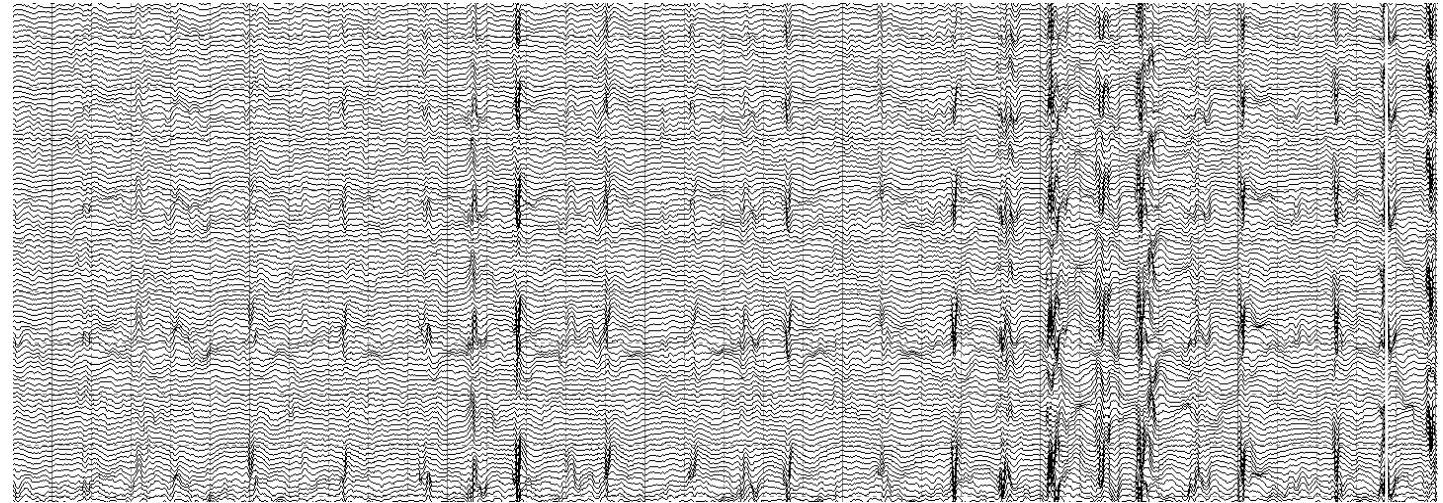
ISACM

International Society for the
Advancement of Clinical MEG



What we want

The ISACM is a nonprofit organization. Our primary objective is to advance clinical applications of magneto-encephalography (MEG), as accomplished through research, education, standardization of procedures, sharing of data and protocols, and the development of strategies for improving reimbursement for clinical examinations.



What we do

We strongly believe that MEG is a powerful tool not only for the investigation of normal brain functions but especially for the diagnostic use in a clinical environment. By bringing together basic research, development of new methods, clinical studies and routine diagnostics, we aim to leverage MEG utilization in neurology, neurosurgery, psychiatry, psychology, obstetrics, otolaryngology and other fields.

By building a community, organizing meetings and mediating communication, we aim to:

- Encourage and facilitate the use of MEG in the clinical management of patients with neurological and psychiatric disorders.
- Develop and support standards for practice of clinical MEG examinations. These standards will encompass both data collection and data analysis strategies.

- Develop and support standards for the training of technologists, technicians, and Ph.D. and M.D. scientists and clinicians in the collection, analysis and interpretation of clinical MEG data.
- Support and aid in the formation, development and coordination of MEG multi-center clinical trials and normative and clinical databases.
- Provide resources for patient and physician education on the clinical uses of MEG.
- Serve as an information resource for government-based and private insurance companies considering reimbursement for clinical MEG services.
- Collaborate with other national and international societies.

